

LOCKING COBRA™

One-Piece Cable and Pipe Clamp
The new standard for heavy-duty applications.



POWER-TOOL FRIENDLY !

PRE-SET TORQUE !

NO GUESSWORK !

ANTI-VIBRATION !

- Power-tool compatible for fast and efficient installation
- Patented pre-set torque mechanism takes the guesswork out of installation, delivering optimum torque even when using power tools
- Pre-set torque prevents over-tightening and excess pressure on delicate cables
- Anti-vibration nut ensures permanent installation even in high-vibration environments
- Superior design load capabilities for heavy-duty applications:
 - 350 lb for 1/2" to 2-1/2" trade sizes
 - 450 lb for 3" to 4" trade sizes

SPECIAL LAUNCH OFFER!

Complete details on back.

Thomas & Betts

FREE! Power tool deep socket nut driver*

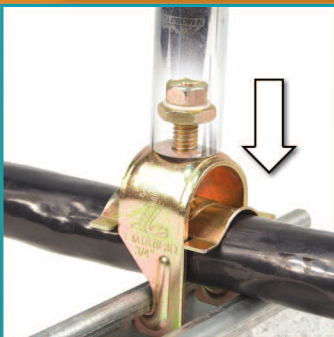
* Included in first 4,000 cartons sold.



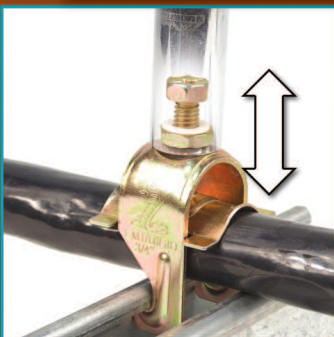
SPEED UP INSTALLATION WITH NO CABLE DAMAGE!



Position LOC-KING Cobra™ clamp.



Using a power tool fitted with a 5/8 in. (16mm) socket, tighten lock nut...



until it 'blocks' and will no longer turn. Installation is complete.

Note: When the pre-set torque engages, the lock-nut separates from the bolt head and stops firmly against the clamp body.

Pre-set, power-tool friendly, torque mechanism for fast, efficient installation

Anti-vibration nut ensures permanent clamp installation

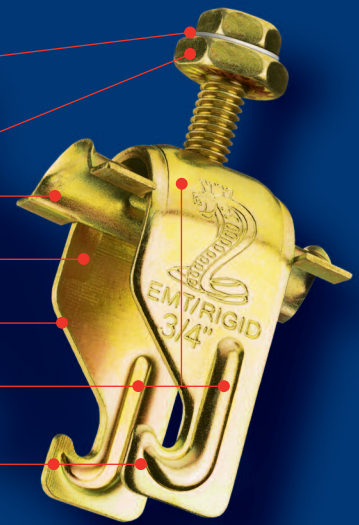
Wide saddle with anti-rotation tabs for even load distribution

One-piece, heavy-duty steel construction with GoldGalv® finish for increased corrosion protection

Rugged stirrup minimizes deflection

Shoulder and hook embosses increase loading capability and prevent clamp deformation

Parallel hook design keeps conduit and cable square with strut



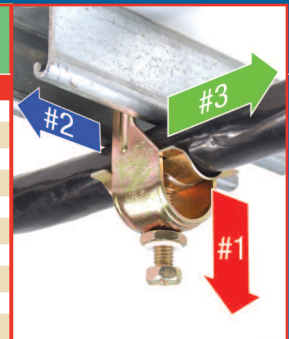
The LOC-KING Cobra™ heavy-duty pipe and cable clamp adds two new design innovations to the heavy-duty features of the original King Cobra™ clamp.

First, a pre-set torque mechanism takes the guesswork out of installation, ensuring optimum torque and eliminating excess pressure on cables. Since the torque is pre-set, LOC-KING Cobra™ clamps are ideally suited for use with power tools, making installation faster and more efficient than ever.

Secondly, the incorporation of an anti-vibration nut means that once installed, LOC-KING Cobra™ clamps remain securely installed even in high-vibration environments.

LOAD GUIDELINES

| Catalogue No. | Load #1 (lb) | Load #2 (lb) | Load #3 (lb) |
|---------------|--------------|--------------|--------------|
| Safety Factor | 4 | 1 | 1 |
| LKPC050 | 350 | 50 | 50 |
| LKPC075 | 350 | 50 | 50 |
| LKPC100 | 350 | 50 | 50 |
| LKPC125 | 350 | 50 | 50 |
| LKPC150 | 350 | 50 | 50 |
| LKPC200 | 350 | 50 | 50 |
| LKPC250 | 350 | 50 | 50 |
| LKPC300 | 450 | 50 | 50 |
| LKPC350 | 450 | 50 | 50 |
| LKPC400 | 450 | 50 | 50 |



- Factory pre-set torque releases at 27 in. ± 10 in.-lb during first time installation only.
- For rigid or EMT pipe application, we recommend applying a torque of 45 in.-lb.

ORDERING INFORMATION

| Catalogue No. | For EMT Trade Size | For Rigid Conduit Trade Size | Cable O.D. Range (in.) | Quantity per Box |
|---------------|--------------------|------------------------------|------------------------|------------------|
| LKPC050 | 1/2 | 1/2 | 0.650 - 0.890 | 100 |
| LKPC075 | 3/4 | 3/4 | 0.860 - 1.110 | 100 |
| LKPC100 | 1 | 1 | 1.100 - 1.400 | 100 |
| LKPC125 | 1-1/4 | 1-1/4 | 1.400 - 1.725 | 50 |
| LKPC150 | 1-1/2 | 1-1/2 | 1.690 - 1.980 | 50 |
| LKPC200 | 2 | 2 | 1.980 - 2.576 | 50 |
| LKPC250 | 2-1/2 | 2-1/2 | 2.576 - 3.060 | 25 |
| LKPC300 | 3 | 3 | 3.060 - 3.626 | 25 |
| LKPC350 | 3-1/2 | 3-1/2 | 3.626 - 4.126 | 25 |
| LKPC400 | 4 | 4 | 4.126 - 4.626 | 25 |



Multi-driver combination bolt head accepts a wrench, screwdriver, nut driver and deep socket nut driver.

Regional Sales Offices

Atlantic1-877-862-4357
 Quebec1-800-465-1399
 Ontario1-877-291-7771
 Mid-West1-866-540-8220
 Alberta1-888-664-5666
 British-Columbia.....1-866-540-8220



www.tnb-canada.com